



The dissemination of information today does not only come from mainstream media, but is also spread in a structured, massive, and systematic on various online messaging platforms, the most popular of which is WhatsApp. WhatsApp is an online chat platform that has the largest active users in Indonesia. Based on this, an effective and efficient information dissemination process through WhatsApp can be an optimal solution to the above challenges.

Our WhatsApp Broadcast solution is built with advanced technology to simplify the process of information dissemination in the form of spreading counter-narratives, creating defined conditions, and other things that can be customized according to user parameters and packaged in an easy way to operate the system. Our solution is designed using advanced technology by implementing analytical algorithms, anti-blocking algorithms, and anonymous accounts so that user privacy can be protected.

Next-generation technology designed to enable users to effectively broadcast information using WhatsApp

Gisure® Whatsapp Broadcaster Features



Anti-Blocking Algorithm

A solution equipped with a special mechanism designed to avoid account blocking by WhatsApp.



Anonymous

Protects user privacy from being exposed to the public using an anonymous account.



Send Anywhere

Send messages to any MSISDN with a WhatsApp account. Independent of service provider, time, location, and area restrictions.



Multiple Account

Broadcast messages simultaneously with multiple WhatsApp accounts.



Receiving and Saving

Save each message into a database system and view them in a user-friendly dashboard.



Analytics

Dashboard with statistical information for all sent messages.



Delivery Status

Detailed information about message delivery status "Viewed, Delivered, Processed and Pending" This information can help users to analyze and evaluate the socialization process that has been carried out.



Chatterbot

AI Bot feature automatically replies to incoming messages. Replies can be customised with system parameters. AI Bot is able to reply using Natural Language Program Algorithm.



Send Anything

Users can broadcast messages containing text, images, video, audio, documents, or contacts.



Export Report

Export activity reports into PDF or CSV files.



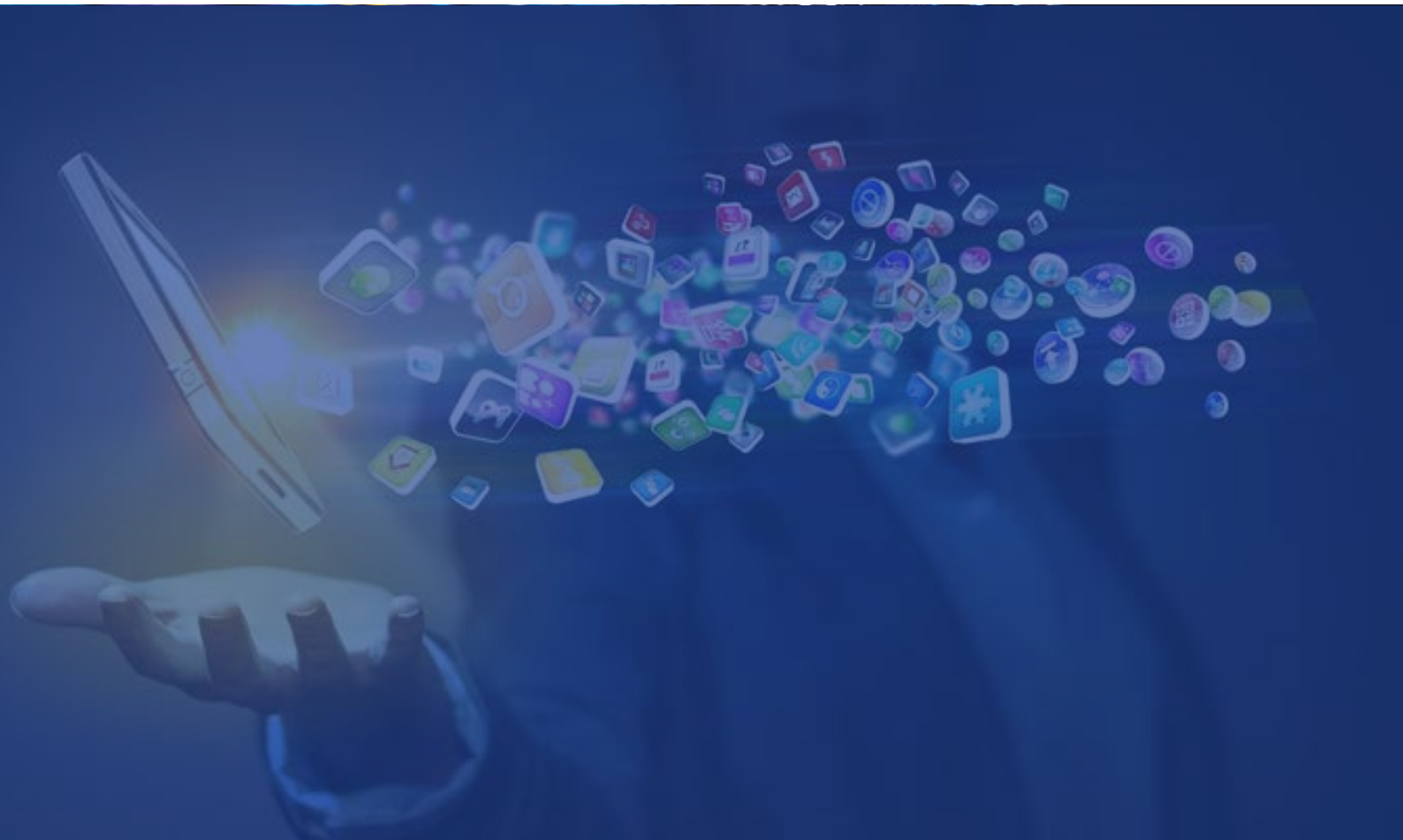
Admin

Admin access is used to add and authorize users to operate the system.



User Friendly

Admin access is used to add and authorize users to operate the system.



gibox

www.giboxdigital.com